



OPEN ACCESS

# Recurrent hamstring muscle injury: applying the limited evidence in the professional football setting with a seven-point programme

Peter Brukner,<sup>1</sup> Andrew Nealon,<sup>1</sup> Christopher Morgan,<sup>1</sup> Darren Burgess,<sup>1</sup>  
Andrew Dunn<sup>2</sup>

► Additional material is published online only. To view please visit the journal online (<http://dx.doi.org/10.1136/bjsports-2012-091400>).

<sup>1</sup>Department of Sports Medicine and Sports Science, Liverpool Football Club, Liverpool, UK

<sup>2</sup>North West Musculoskeletal Imaging, Liverpool, UK

## Correspondence to

Dr Peter Brukner, c/- 158 Unity Building, 3 Rumford Place, Liverpool L3 9BW, UK; [peterbrukner@gmail.com](mailto:peterbrukner@gmail.com)

Received 8 July 2012

Revised 11 December 2012

Accepted 17 December 2012

## ABSTRACT

Recurrent hamstring injuries are a major problem in sports such as football. The aim of this paper was to use a clinical example to describe a treatment strategy for the management of recurrent hamstring injuries and examine the evidence for each intervention. A professional footballer sustained five hamstring injuries in a relatively short period of time. The injury was managed successfully with a seven-point programme—biomechanical assessment and correction, neurodynamics, core stability, eccentric strengthening, an overload running programme, injection therapies and stretching/relaxation. The evidence for each of these treatment options is reviewed. It is impossible to be definite about which aspects of the programme contributed to a successful outcome. Only limited evidence is available in most cases; therefore, decisions regarding the use of different treatment modalities must be made by using a combination of clinical experience and research evidence.

## INTRODUCTION

Hamstring muscle injuries (HMIs) present one of the greatest challenges for those working with athletes and are known to be the most common injuries in sports that involve high-speed running such as athletics,<sup>1</sup> cricket<sup>2</sup> and the various football codes.<sup>3–8</sup> Recurrence levels are high, ranging from 12% to 63%.<sup>4–6 9–12</sup> The first month after return to play (RTP) is the highest risk time for recurrence,<sup>4 13</sup> though the risk remains elevated for at least 12 months.<sup>9 14 15</sup> Despite a rapidly expanding body of the literature investigating HMI in recent decades,<sup>16</sup> there has been no significant reduction in HMI rates in professional sport<sup>17 18</sup> and recurrences typically cost the athlete more playing time than primary injury.<sup>10 17 19</sup> HMIs are heterogeneous, making their prognosis difficult to predict<sup>20</sup> and there is no consensus on a single clinical or functional test or imaging investigation that provides strict criteria for safe RTP.<sup>21</sup>

A recent systematic review of risk factors for recurrent HMI determined that only five prospective studies fulfilled its inclusion criteria and concluded that no risk factor could be judged as having strong or moderate evidence (box 1).<sup>22</sup>

Evidence for addressing modifiable risk factors includes hamstring muscle strengthening and effecting change in associated properties such as hamstring:quadriceps (H/Q) strength ratios and optimum angle of peak torque<sup>36</sup> for which reliability for the different measures varies.<sup>37 38</sup>

There is little evidence regarding the efficacy of various treatments for HMI. Recent reviews of interventions for acute hamstring injury<sup>39 40</sup> included only three randomised studies that included time to RTP as an outcome. No paper studied the same intervention. Consequently, clinicians are obliged to consider the evidence that is available in conjunction with their own clinical experience and apply it to the individual case in determining the particular treatment regime to be implemented.<sup>41</sup>

The aim of this paper was to use a clinical example to describe a treatment strategy for the management of recurrent hamstring injuries and examine the evidence for each intervention.

## CLINICAL PRESENTATION

A 26-year-old professional footballer first sustained an injury to his right hamstring when sprinting during a match. Clinically<sup>42</sup> and radiologically<sup>43</sup> he presented with a grade 2 biceps femoris musculotendinous junction strain (figure 1). Intermuscular haemorrhage tracking around the sciatic nerve was noted.

Past injuries included left adductor strain 18 months prior; left soleus strain 18 months prior; left proximal hamstring tendinopathy 17 months prior; right knee grade 3 medial collateral ligament (MCL) tear 16 months prior; right Achilles reactive tendinopathy onset 8 months prior and left adductor strain 6 months prior.

## Treatment included

RICE followed by soft tissue massage, stretching, core strengthening, progressive agility and neuromuscular control exercises, a graded running programme and an isolated hamstring strengthening programme with specific emphasis on eccentric exercises. He returned to full-team training (RTT) 21 days postinjury, RTP 30 days postinjury and then played the next three games without incident.

Two days after his third game, when the player was walking, he experienced a gradual onset of posterior thigh pain. Clinically, he presented with a grade 1 hamstring strain that was MRI negative. He RTT 7 days postinjury and RTP 16 days postinjury, playing a full game without incident. The player then went on holiday for a month which involved long periods of travel, sustained sitting and minimal exercise.

On returning to preseason training, he complained of 'tightness' in his right hamstring from the second day of training, worsening until day 5 when he was withdrawn from training reporting

**To cite:** Brukner P, Nealon A, Morgan C, et al. *Br J Sports Med* Published Online First: [Please include Day Month Year] doi:10.1136/bjsports-2012-091400

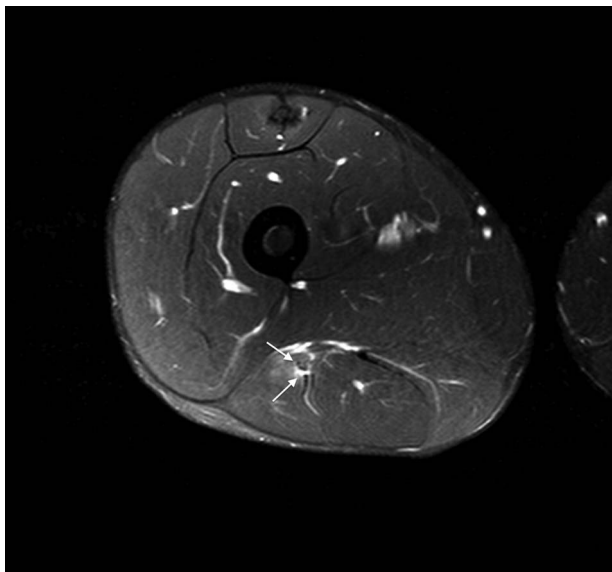
## Box 1 Risk factors for hamstring muscle injury

*Primary injury*Increasing age<sup>3 9 14 23–28</sup>Ethnicity—Black African or Caribbean<sup>12</sup> and Australian aboriginal<sup>27</sup>Previous injury—major knee injury (eg, ipsilateral anterior cruciate ligament reconstruction, independent of graft selection<sup>27 29</sup> and history of osteitis pubis<sup>27</sup>Higher level of competition<sup>12 27</sup>Later stages of football matches<sup>5 12 30</sup>Hamstring muscle strength imbalance profile<sup>31</sup>*Recurrent injury*History of Hamstring muscle injury<sup>3 14 15 23 26–28 32 33</sup>Larger volume size of injury as measured on MRI<sup>34</sup>Grade 1 injury<sup>10 35</sup>

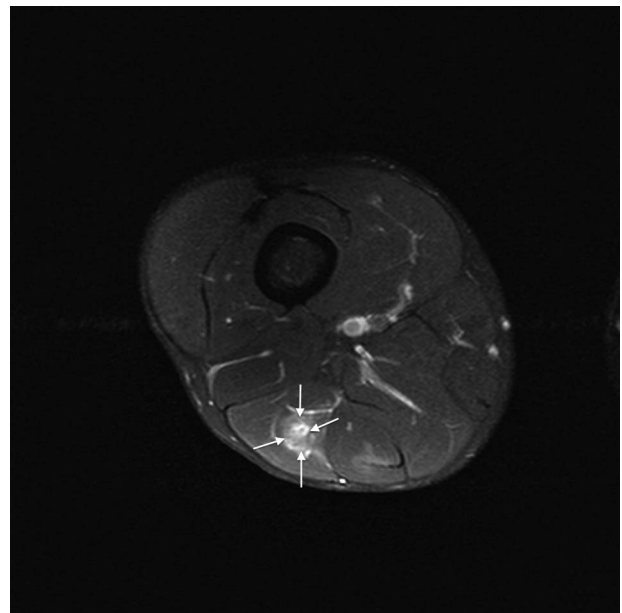
more intense discomfort after kicking a ball in shooting for goal. Clinically, he presented with a grade 1 hamstring injury that was confirmed on MRI (figure 2) to be more medial, towards the epimysium and not continuous with the scar tissue from the initial injury.

Given the player's history of lower back pain, symptoms of 'tightness' on the right side and a feeling of general restriction throughout the lumbar spine, an epidural corticosteroid injection was performed at L4–5 followed by 2 days of complete rest from physical activity.

Postinjection the player reported a general improvement in his feeling of 'freedom' on the right side and felt able to swing his legs through fully into hip flexion when running for the first time since the onset of hamstring stiffness on return to pre-season training. However, following a long drive (>3 h) 5 days later he reported a return of his posterior thigh and lumbar spine restriction. He was treated similarly to the initial injury, RTT 10 days postinjury and RTP 21 days postinjury, playing a full preseason friendly game without incident.

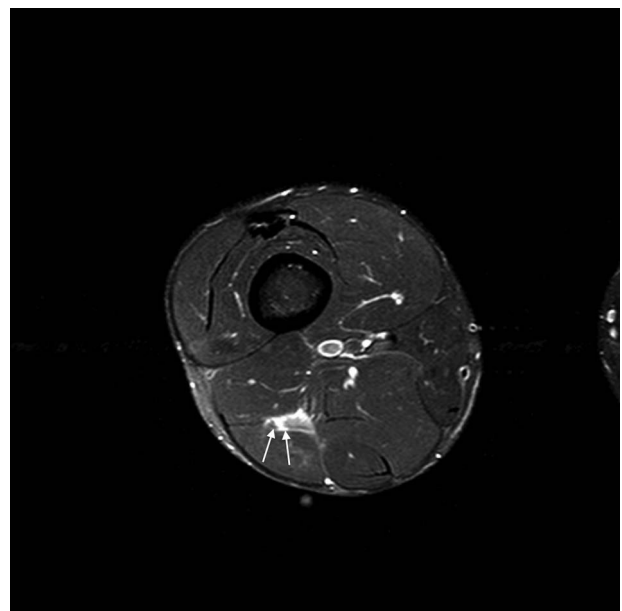


**Figure 1** Axial T2-weighted image with fat saturation showing small region of muscle fibre disruption (arrows) reflecting grade 2 injury, involving aponeurosis of long head of biceps femoris.



**Figure 2** Axial T2-weighted image with fat saturation showing inter fascicular oedema (arrows) centrally reflecting grade 1 injury, in the long head of biceps femoris.

Five days later he started another pre-season game. After 5 min, he sprinted with the ball and crossed the ball with a whipping action and immediately felt some tightness in his hamstring, without an associated feeling of tearing or pain, and was thereafter unable to sprint with confidence. He left the pitch and again presented clinically with a grade 1 injury. Subsequent MRI was reported as a small grade 2 injury (figure 3). This injury was again within the long head of biceps femoris muscle, at a similar level, but not continuous with the site of any previous injury.



**Figure 3** Axial T2-weighted image with fat saturation showing small region of muscle fibre disruption (arrows) reflecting grade 2 injury, involving the long head of biceps femoris with myofascial oedema.

After this fourth episode the player underwent a more prolonged and intensive rehabilitation which included progressions based on the percentage of normal running activity in a game (accelerations, repeated efforts, total distance and high-speed distance). The strength programme had an even greater bias on eccentric hip and knee dominant hamstring strength exercises. He RTT 25 days postinjury and RTP 34 days postinjury as a substitute coming on late in the game. Despite extensively warming up prior to joining the play, after 2 min he accelerated at medium intensity and felt some hamstring pain. He played the few remaining minutes but was unable to sprint. Clinically, he presented with a grade 2 strain but MRI showed only a small myofascial tear (figure 4). The player had completed a full week's training prior to this game including repeated maximal sprinting and match play situations at full intensity.

At this stage, the player had sustained five hamstring injuries in 5 months, none very severe clinically, all of which had undergone a routine yet comprehensive rehabilitation and graded RTP programme that had been successful with other players.

Table 1 summarises the episodes of hamstring injury.

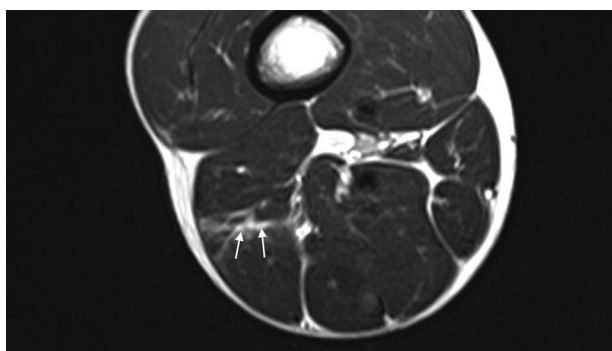
### Investigations

Between the fifth episode and RTP, a number of additional investigations were performed, including a standard lumbar and posterior thigh MRI; an upright lumbar MRI with standing, sitting and lumbar flexion views and nerve conduction studies, all of which were normal. Isokinetic assessment was conducted 22 days after the final episode using a Biodex 3. After familiarisation, the player completed five maximal efforts of concentric knee flexion and extension from 0° to 90° knee flexion at 60°/s. The results demonstrated right hamstring strength > left (142 Nm vs 128 Nm, 10% asymmetry); right H/Q ratio < left (0.57 vs 0.62) and right peak torque angle > left (24° vs 23°).

### THE SEVEN-PART MANAGEMENT PLAN

The clinical challenge was to identify and address any possible factors that may have contributed to the recurrences, and to review and modify the rehabilitation programme accordingly. Potentially relevant risk factors and modifiable hamstring muscle properties are noted in table 2.

It was decided early in this injury management to prolong the rehabilitation period to enable a higher volume of intervention and loading. Given the lack of evidence on known univariate risk factors, we investigated a range of other issues that the available evidence and our collective clinical experience suggested may be contributing to elevated risk of reinjury.



**Figure 4** Axial T2-weighted image showing interfacial and myofascial oedema (arrows) reflecting grade 1 injury, involving the long and short heads of biceps femoris.

### Biomechanical assessment and correction

A biomechanical assessment included review by a sports podiatrist. Significant findings included asymmetrical ankle joint dorsiflexion (L=7.5 cm vs R=9 cm on dorsiflexion lunge testing)<sup>45 46</sup> and a positive Trendelenburg sign<sup>47</sup> on the right side with associated internal femoral rotation on treadmill gait analysis. Pelvic assessment was suggestive of a slight anterior rotation of the right ilium with associated functional leg length discrepancy (left approximately 5 mm longer than right).

The player was fitted with custom-made semirigid orthotics to address the 5 mm leg length discrepancy. They were worn in both trainers and football boots from the start of the rehabilitation programme. Specific hip abductor and lateral trunk strengthening exercises were increased into his programme.

Osteopathic manual therapy was started aiming at achieving a sustained resolution of the anterior tilt of the right ilium. Initial manipulation of the ilium was performed by an osteopathic specialist in Germany. Further sacroiliac joint (SIJ) manipulation was undertaken on a weekly basis and combined with specific stretches of the posterior chain. Other manipulations performed included right anterior astragalum (anterior-external position), anterior fibula head, internal hip, anterior iliacum and horizontal sacrum, T<sub>11</sub>-L<sub>2</sub>, T<sub>7</sub>-C<sub>1</sub> level and first rib (right side) and occipital-C<sub>1</sub>-C<sub>2</sub>.

### Neurodynamics

Although adverse neurodynamic signs were not objectively identified clinically or radiologically—SLR and slump test had at all times been consistently equal and within normal ranges as were repeated normal lumbar MRIs—the player continued to complain of symptoms consistent with a neural contribution to his presentation. Relevant complaints included prolonged sitting, especially while driving, causing numbness and aching in the right buttock and posterior thigh. The player also complained of a ‘general restriction’ in the right side during swing phase of high-speed running and kicking, and an asymmetrical feeling of heaviness on the right side when fatigued. These symptoms were addressed in two ways.

The first epidural (L4/5) resulted in an immediate resolution of these neural symptoms. However, the player felt that the effect wore off after 4–5 days which coincided with a long car journey in which the player had been sitting for 3 h. It is unclear whether the effect of the epidural had indeed worn off rapidly, or if it had been mechanically counteracted by sustaining the provocative sitting and flexed position. Due to the initial success of the epidural and unknown influence of the prolonged sitting and flexion on negating its effectiveness, a second epidural was performed between the fourth and fifth episodes, with a more prolonged rest period followed by strict instructions on avoiding any periods of prolonged sitting.

The initial rehabilitations included mobilising the neural structures within the posterior thigh via sliding techniques<sup>48</sup> complemented by mobilising and releasing areas along the course of the sciatic nerve. This included passive accessory mobilisation and manipulation of lower lumbar segments, manual release and stretching of the hip rotators, intermuscular mobilisation of the hamstring muscle group and mobilisation of the proximal tibio-fibular joint due to its close proximity to the common peroneal nerve.

As these techniques were components of the previous failed rehabilitations, a more aggressive neural mobilisation approach was started incorporating an SLR-biased technique sensitised

**Table 1** Summary of features of each hamstring injury episode

| Episode | Days until next episode | Onset             | In         | Mechanism                                 | Clinical severity <sup>42</sup> |             |                        | Imaging severity <sup>43</sup> (and interventions)                                |            |  |             |             |                                     |                                |               |                              |
|---------|-------------------------|-------------------|------------|---|---------------------------------|-------------|------------------------|---|------------|--|-------------|-------------|-------------------------------------|--------------------------------|---------------|------------------------------|
|         |                         |                   |            |   | Clinical grade                  | AKE deficit | Days to walk pain free | Grade   | Site       | Distance from ischial tuberosity <sup>44</sup> | Days to RTT | Days to RTP | Eccentric strength sessions pre-RTP | Team training sessions pre-RTP | Games missed  | Games played to next episode |
| 1       | 46                      | Sudden            | Match      | Sprint                                    | 2                               | 15°         | 2                      | 2   | Long head  | 11.7 cm  | 21          | 30          | 6                                   | 5                              | 3             | 3                            |
| 2       | 49                      | Insidious         | Theme park | Walking-2 days postgame                   | 1                               | 0°          | 1                      | 0   | N/A        | N/A  | 7           | 16          | 5                                   | 4                              | 1             | 1                            |
| 3       | 27                      | Sudden on gradual | Training   | Kicking (shooting at goal)                | 1                               | 0°          | 1                      | 1   | Long head  | 23.6 cm  | 10          | 21          | 7                                   | 4                              | N/A preseason | 1                            |
|         |                         |                   |            |   |                                 |             |                        | Day 1: epidural #1  |            |  |             |             |                                     |                                |               |                              |
| 4       | 35                      | Gradual           | Match      | After long high-speed run                 | 1                               | 0°          | 1                      | 2   | Long head  | 27.9 cm  | 25          | 34          | 11                                  | 7                              | 4             | 0                            |
|         |                         |                   |            |   |                                 |             |                        | Day 17: Epidural #2   |            |  |             |             |                                     |                                |               |                              |
| 5       |                         | Sudden            | Match      | Low speed run 2 min after 81 min on bench | 1                               | 0°          | 2                      | Myo-fascial tear  | Short head | 28 cm  | 28          | 38          | 12                                  | 7                              | 5             |                              |
|         |                         |                   |            |   |                                 |             |                        | Day 5: lumbar routine, sitting and upright MRI commence aggressive neural sliders |            |  |             |             |                                     |                                |               |                              |
|         |                         |                   |            |   |                                 |             |                        | Day 10: actovegin injections  |            |  |             |             |                                     |                                |               |                              |

**Table 2** Currently proposed risk factors after episode 5

| Non-modifiable risk factors                      |  |
|--|--|
| History of HMI                                   | Yes: five episodes in 5 months   |
| Age>23/24  | Yes: age 26  |
| Black African/Caribbean ethnicity                | Yes  |
| Past ACL/major knee injury history               | No: as per definition in study but Gd 3 MCL 18 months prior                          |
| Past osteitis pubis                              | No: as per definition in study but bilateral Sportsman's hernia repair 8 years prior |
| Modifiable hamstring muscle properties           |  |
| Bilateral hamstring strength asymmetry>8% (REFS) | No (injured side strength>uninjured side)  |
| Concentric H/Q ratio<0.66 (REFS)                 | Yes (0.58 vs 0.62)   |
| Optimum angle (REFS)                             | 23° (vs 24°)   |

HMI, hamstring muscle injury.

with internal hip rotation, adduction and dorsiflexion. This was applied daily with a dosage of 3×10 repetitions.

### Core stability/neuromuscular control/lumbar spine strengthening

The player's core stability programme was redesigned. The programme included a combination of global core type exercises; control exercises with an emphasis on transversus abdominis and internal oblique recruitment and reformer-based Pilates exercises with the aim of combining lumbopelvic control with dynamic recruitment of the hip extensors and hamstring muscles. The player continued to participate in the squad injury prevention programme, a multistation session conducted twice per week before training. These sessions comprise a circuit of proprioceptive, neuromuscular control, core stability/strength and a varied lower limb strength exercise.

Core strengthening was supplemented using Document Based Care (DBC; [www.dbc-clinic.com](http://www.dbc-clinic.com)) core strengthening machines which have been designed to isolate the specific muscles involved in trunk core stability through a series of specific loaded exercises incorporating the main global lumbar movements (extension, rotation, flexion and side flexion) while limiting movement and activity in the muscles around the hips and thoracic spine. Exercises on the DBC machines were completed every other day from week 2 of the rehabilitation.

### Increase strength in hamstrings with eccentric-biased programme

Eccentric strengthening should form an essential part of any hamstring rehabilitation programme<sup>19 49</sup> and the player was exposed to this early in all the rehabilitations. Initially, this was in the form of manual eccentric strengthening exercises completed prone on the plinth in three sets of six repetitions with

maximal pain-free effort. From week 2, the player completed a 1-in-3 day-strength programme which included both hip and knee dominant hamstring exercises. The programme included double and single leg reverse dead lifts, Nordic hamstring exercises with variations of hip angle, high box step ups, YoYo fly-wheel hamstring exercises<sup>50</sup> and slide board hamstring curls in a bridge position.

In the final 'failed' rehabilitation, the player completed 11 strength sessions; in the latter rehabilitation the number of strength sessions was similar (12) with a similar volume of eccentric strength exercises. The significant difference was an increase in the number of exercises which focused on faster speed of contraction at longer hamstring muscle lengths such as drop lunges (hip dominant) and single leg cable sprinter kick outs (knee dominant).

### Overload running programme

Hamstring rehabilitation protocols typically involve incremental progression of running speed with supplementary conditioning when appropriate. The total running and non-weight-bearing training load is usually progressed based on standard weekly training distances and high-speed running intensities. During the player's previous HMI, this type of running progression was administered, with the player RTT after completing various objective assessments.

Running load was significantly increased during this latter rehabilitation. The programme was designed to overload the player with high-speed running to provide greater exposure to excessive eccentric loads during this specific movement.<sup>51</sup> It comprised eight sets of 3 day cycles with consecutive days of running followed by a day of 'off legs' conditioning (pool training). The first of the two running days was progressed over the 24-day period based on both the maximum running speed and the player's individual training and match high-speed running and accelerations/deceleration requirements.

The second of the two running days was a submaximal running session based on the player's maximal aerobic speed (MAS).<sup>52</sup> This session (4×8×100 m at 120% MAS or 6 m/s) was, therefore, conducted eight times and this not only improved the player's aerobic running power but also served as a regular fitness test. As the session was standardised, close heart rate (HR) and Heart Rate Variability (HRV) monitoring determined the player's adaptation to this standard protocol during the rehabilitation.

Table 3 demonstrates the programme.

The programme was monitored using GPS tracking which provided data on variables including total distance, number of high-speed efforts, high-speed metres and accelerations/decelerations during training sessions.<sup>53</sup> In conjunction with video-based tracking of matches (Prozone), this provides an objective measure of each player's 'standard week' in terms of training and match loads. From this standard week incremental load percentages can be calculated.

**Table 3** Summary of the running overload programme

| Cycle | 1               | 2               | 3               | 4               | 5               | 6               | 7               | 8                |
|-------|-----------------|-----------------|-----------------|-----------------|-----------------|-----------------|-----------------|------------------|
| Day 1 | 50% speed+match | 60% speed+match | 70% speed+match | 80% speed+match | 85% speed+match | 90% speed+match | 95% speed+match | 100% speed+match |
| Day 2 | MAS/assess      | MAS             | MAS             | MAS             | MAS             | MAS             | MAS             | MAS              |
| Day 3 | Bike            | Off             | Pool            | Off             | Bike            | Off             | Pool            | Off              |

MAS, maximal aerobic speed.

## Injection therapies

The player consulted an international physician 5 days after the last episode. The physician concluded that this HMI was not serious and that abnormalities in the lumbar region were contributing to the reinjuries. He injected a number of sites with local anaesthetic followed by a mixture of Traumeel and Actovegin. Injections were performed in the lumbar regions centrally, over the facet joints and the iliolumbar ligaments bilaterally and the right SIJ. Three similar injections were administered into and adjacent to the HMI site.

## Stretching/yoga/relaxation

The player started regular sessions of yoga-based stretching and relaxation with a qualified DRU yoga instructor. These consisted of DRU fascial warm-up techniques; intense hamstring and low back stretches; guided DRU relaxations and DRU breath training (techniques to improve lung capacity, stamina and to activate the relaxation response through the body). Sessions were undertaken for 60 min twice per week. The player soon reported subjective improvement in his hamstring freedom.

## OUTCOME

The player RTT 33 days postinjury and was deemed available for selection in 39 days. He then RTP 42 days postinjury. He played 33 out of a possible 42 games until the end of the season. He missed seven games with a ruptured plantaris but did not miss any due to hamstring problems. He continued this treatment regime at maintenance level during this period.

## DISCUSSION

### History and recurrence risk

There are a number of possible causative links between the player's previous injuries and this series of HMI. These included right knee grade 3 MCL rupture 16 months prior. Managed conservatively and despite causing no knee symptoms since RTP, persistent laxity may induce a subtle change in knee biomechanics during end-stage swing phase. It is possible that incomplete rehabilitation from the player's right adductor strain 18 months prior may increase load on the lateral hamstrings to compensate for medial weakness. However, the player has not had any adductor symptoms since the injury and his objective signs on preseason screening<sup>54 55</sup> were within 'normal' ranges.<sup>54 55</sup>

Right Achilles tendinopathy pain earlier in the season may have resulted in altered running mechanics and reduced plantar flexor power though this was not specifically measured. The player had proximal left hamstring pain 17 months prior reporting a similar feeling of 'restriction' during swing phase when high-speed running. Investigations of the lumbar spine at that time showed no abnormality and he was diagnosed with proximal hamstring tendinopathy. The symptoms of pain soon resolved, but a feeling of 'restriction' persisted for approximately 1 year.

### SEVEN PART MANAGEMENT PLAN

Seven interventions were performed following the fifth episode of HMI. There are varying degrees of evidence for these interventions.

### Biomechanical assessment and correction

A significant association between functional leg length asymmetries of greater than 1.8 cm and approximately four times greater risk of HMI has been demonstrated in professional footballers.<sup>56</sup> Leg length asymmetries have also been associated with

innominate bone rotation, anteriorly on the side of the shortened and posteriorly on the side of the lengthened limb<sup>57</sup>. SIJ dysfunction has also been reported to be associated with gluteal hip extensor weakness in patients with lower back pain, compared with patients with lower back pain without SIJ dysfunction.<sup>58</sup> Elite sprinters who subsequently sustained HMI also demonstrated reduced concentric hip extensor strength relative to uninjured sprinters.<sup>59</sup> These findings suggest that there may be a relationship between SIJ dysfunction, gluteal hip extensor weakness and HMI.

Despite treatment restoring the normal load transfer patterns on dynamic pelvic girdle testing during active straight leg raise in supine<sup>60</sup> and in weightbearing,<sup>61 62</sup> the player consistently demonstrated a small leg length asymmetry. Despite this asymmetry being considerably less than 1.8 cm<sup>56</sup> and within normal variance and measurement error,<sup>63 64</sup> given the circumstances of the player's recurrent injury history, custom-made orthotics were prescribed to correct this asymmetry. They were immediately well tolerated and remain a component of the player's overall management regimen even though their specific effect is incalculable.

The anatomical relationship between biceps femoris, which is also the most commonly injured of the hamstring muscles,<sup>65</sup> and SIJ stiffness has been demonstrated.<sup>66-69</sup> Several authors have also demonstrated the relationship between SIJ dysfunction and alterations in load transfer throughout the pelvis via leg asymmetries during walking,<sup>70</sup> altered muscle activation timing and strength including earlier hamstring activity onset during functional movements and compromised pelvic stability.<sup>58 71 72</sup> Subjects recovering from HMI have similarly been shown to demonstrate earlier hamstring activity onset when preparing for single leg stance,<sup>73</sup> suggesting a common trend of altered neuromuscular control between patients with SIJ dysfunction and hamstring injury.

However, it appears that this relationship between SIJ dysfunction and the hamstrings relates to muscle activity onset timing<sup>58</sup> rather than the muscle length as was proposed.<sup>67</sup> The hamstring length has also been shown not to be associated with the degree of lumbar lordosis or anterior pelvic tilt in several studies<sup>74-77</sup> despite excessive anterior pelvic tilt being suggested to be associated with HMI.<sup>12 78</sup>

SIJ dysfunction has been reported in subjects with HMI<sup>79-81</sup> though the inter-rater reliability of many of the tests used is known to be poor<sup>79</sup> with almost all subjects including controls in these studies identified as having some level of dysfunction. While Cibulka *et al*<sup>80</sup> claimed that SIJ manipulation resulted in an increase in hamstring peak torque measured isokinetically, significant methodological flaws undermine the interpretation of this outcome<sup>40</sup> and further research is required to validate the role of SIJ manipulation in the treatment of the player with HMI.<sup>71</sup> It is also important to differentiate between studies diagnosing SIJ dysfunction and those based on identifying the SIJ as a pain source using a combination of manual pain provocation tests.<sup>82</sup>

Asymmetries in hip joint ROM have also been associated with SIJ dysfunction in patients with lower back pain<sup>83</sup> and pelvic innominate tilt has been reported to alter following SIJ manipulation.<sup>83</sup> Future research is proposed to investigate the effects of a pelvic belt on injured hamstring function.<sup>84</sup> Despite the current lack of clarity in the evidence, the theoretical basis for manual therapy to treat clinically diagnosed SIJ dysfunction justifies consideration in the management of the player with HMI.

### Neurodynamics

Neural tension has been shown not to be a risk factor for HMI<sup>28</sup> in two prospective studies in Australian Rules

football.<sup>14 25</sup> However, its relationship with hamstring flexibility<sup>48 85</sup> suggests that such 'sub-threshold' risk factors may combine to increase the recurrence risk. Neural tension has been shown to limit movement and increase stretch resistance when compared to hamstring flexibility measures without added neural tension with this attributed to the extensibility of the neural tissues.<sup>85</sup>

Adverse neural tension, defined as a positive slump test<sup>86</sup> reproducing the player's posterior thigh pain, subsequently reduced by cervical extension, was present in over half of a sample of rugby union players with a history of two or more clinically diagnosed grade 1 HMI in the past 2 years. This contrasted with no positive tests in age, gender and rugby position-matched control subjects.<sup>87</sup> Despite this there was no difference in hamstring flexibility between groups. The authors suggested that the proximity of the sciatic nerve to the hamstrings implicates scarring potentially compromising the normal mobility and nutrition of the sciatic nerve. This suggests that clinical signs of adverse neural tension, or more aptly 'neurodynamics' as proposed by Shacklock,<sup>88</sup> can persist beyond functional recovery.

Research has shown that including slump stretching in the rehabilitation of AFL players with clinically diagnosed grade 1 HMI and a positive slump test resulted in fewer missed matches prior to RTP.<sup>89</sup> Sciatic nerve slider exercises have also been shown to immediately increase lumbar flexion and slump test ROM in comparison to hamstring muscle stretching in isolation in a small pilot study of young footballers.<sup>48</sup>

Shacklock<sup>88</sup> suggests that the primary mechanical fault in the subject with positive neurodynamic tests may be one of 'reduced sliding (neural sliding dysfunction)' which implies a lack of mobility rather than excessive tension. Despite the player consistently demonstrating clinically acceptable symmetrical ranges and absence of symptoms on SLR and slump testing, his history and symptom of a 'lack of freedom' when running at high speed suggested a neural component to his presentation. Following the most recent HMI more aggressive and frequent neural mobilisation techniques were included in the player's management regimen, particularly immediately prior to training and playing.

The rate of MRI-negative scans for clinically diagnosed HMI ranges from 14% to 45%.<sup>12 17 27 35 65 90-92</sup> This relatively common clinical presentation implies a referred posterior thigh pain subgroup of HMI.<sup>27</sup> The origin of the neural supply to the hamstring and posterior thigh implicates the lumbar spine and its neurodynamics to the lower limb as a potential source of pain referral and injury risk.

Orchard<sup>93</sup> proposed that subtle extraforaminal lumbosacral canal impingement of the L5 nerve root may be associated with the increasing age predisposition trend of hamstring and calf injuries in AFL players although injury rates of muscle groups supplied by nerve roots L1-4 show no propensity to increasing age.<sup>94</sup>

Several interventions attempted to address any possible contribution from the lumbar spine. Positive clinical experiences have been reported with imaging-guided corticosteroid injections to the region of the lumbosacral canal in athletes with recurrent hamstring problems, both as treatment for acute pain and a prophylactic intervention for high-risk players.<sup>93</sup> Epidural steroid injections have also been shown to be effective in achieving and sustaining rapid RTP in American footballers with acute lumbar disc herniation shown on MRI.<sup>95</sup>

While the effectiveness of such injections seems greatest in athletes with MRI-negative hamstring or lower limb muscle injury presentations, the frequency and minimal clinical and radiological grade of the HMI sustained by the player, in our opinion, warranted management with lumbar epidural steroid

injection. This was undertaken following his third injury. On returning to running 4 days postinjection, during which time he had rested from all physical activity and avoided any sustained sitting, the player reported immediate and complete relief of his symptom of 'lack of freedom' during swing phase of running. However, an unavoidable long drive the following day corresponded to a return of his posterior thigh ache when sitting and during his next running session the day after he reported his 'lack of freedom' again. This sequence further indicated a mechanical relationship between his lumbar spine and running symptoms and hence the epidural injection was repeated at the next available opportunity.

Unilateral lumbar spine zygapophyseal joint mobilisations have been shown to immediately improve SLR ROM<sup>96</sup> which is a valid measure of lower limb mechanosensitivity.<sup>97</sup> Ankle dorsiflexion induces a different and earlier pattern of muscle activation and also significantly reduces SLR ROM.<sup>97</sup> Oscillatory unilateral lumbar spine mobilisation at L4-5 has also been shown to induce immediate side-specific changes in lower limb sympathetic nervous system (SNS) activity, specifically a sympatho-excitatory response.<sup>98</sup>

Although the optimal dose, grade and vertebral levels of lumbar manual therapy require further investigation and the mechanisms by which the increase in SLR ROM<sup>96</sup> and SNS stimulation<sup>98</sup> are unknown, this evidence suggests that beneficial effects from this intervention are possible. Such manual therapy has been an integral component of the player's pretraining and match routine throughout and since his rehabilitation and is reported to provide improved freedom of lumbar and lower limb mobility.

### Core stability/neuromuscular control/lumbar spine strengthening

A progressive agility and trunk stabilisation programme significantly reduced the HMI recurrence rate at both 2 weeks and 12 months following RTP when compared with a stretching and isolated progressive hamstring strengthening programme.<sup>99</sup> Cameron *et al*<sup>100</sup> also showed that AFL players with poorer swing leg movement discrimination were more likely to subsequently suffer HMI and that a running technique programme achieved improvements in the same neuromuscular control measure.<sup>101</sup> Hamstring muscle stiffness, as measured by the passive knee extension test, was significantly reduced by a 4-week programme of two specific exercises performed twice per week.<sup>102</sup> A 'soccer-specific balance training programme' resulted in a significant reduction in HMI rates in a professional women's football team.<sup>103</sup>

Such research findings suggest that improvements in lumbo-pelvic control can reduce demands on the hamstrings, especially biceps femoris, and subsequently, injury. The player's ongoing programme incorporated all components of the programmes suggested to be effective in preventing reinjury and minimising demands on the hamstrings.

A localised approach to core strengthening with the utilisation of DBC machines<sup>104 105</sup> complemented this programme. In conjunction with functional exercise, isolated strengthening of the trunk muscles was also undertaken with the goal of optimising the rate and gain in 'core strength'.

### Increase strength in hamstrings with eccentric-biased programme

Eccentric exercise is the most researched means of achieving changes in hamstring muscle properties and reductions in HMI rates. While the 2010 Cochrane Collaboration systematic review

on hamstring injury prevention<sup>106</sup> concluded that there was insufficient evidence to draw conclusions on the efficacy of interventions used for preventing hamstring injury in football, its inclusion criteria is perhaps too strict to dismiss the findings of excluded research from clinical practice. Several studies have investigated the effect of various forms of eccentric exercise on HMI rates in sport,<sup>4 14 50 107–111</sup> strength<sup>50 110</sup> and optimum angle measured on isokinetic equipment.<sup>36 112–115</sup> The vast majority reported significant effects on their respective outcome measures.

Previous HMI has been associated with reduced eccentric hamstring strength and biceps femoris EMG activation towards full knee extension in athletes who have returned to training for their sport.<sup>116</sup> It has also been associated with shifting optimum angle towards greater angles of knee flexion compared with the uninjured leg,<sup>113 117</sup> which is the opposite effect to eccentric training.<sup>36 112–115</sup> Given that previous HMI is a strong risk factor for future injury,<sup>3 14 15 23 26–28 32 33</sup> altered muscle properties such as these may contribute to this risk.

Contrastingly, previous HMI has been shown to not significantly affect peak torque<sup>113 116 117</sup> or H/Q ratios.<sup>113 117</sup> Similarly, eccentric exercise programmes have been shown not to significantly affect peak torque<sup>112 113 115</sup> or H/Q ratios,<sup>112 113</sup> perhaps questioning their validity as risk factors for reinjury. Fatigue induced by a soccer-specific treadmill protocol and repeated eccentric isokinetic testing was shown to result in decreasing eccentric torque output, especially at higher testing speeds.<sup>30</sup> This suggests that the effects of previous injury, eccentric exercise and fatigue on hamstring muscle performance are contraction type, knee angle and parameter specific and it may be critical to work the muscle accordingly in rehabilitation. The weight of evidence indicates that the terminal swing phase represents the highest risk phase of the gait cycle during high-speed running<sup>118–122</sup> when it is known that the hamstrings are most active<sup>119</sup> and eccentrically as the knee is extending<sup>123</sup> while also at peak length.<sup>123</sup> This suggests that eccentric training, ideally at lengthened ranges, is the most indicated form of exercise in the rehabilitation and prevention of HMI.<sup>19 49</sup>

Crosier<sup>31</sup> demonstrated in a large prospective study of professional footballers that preseason normalisation of strict strength imbalance criteria that included bilateral asymmetry and various H/Q ratios reduced injury rates to that of non-imbalanced players. The discriminatory benefits of eccentric testing were also demonstrated with over 30% of players identified as imbalanced exclusively on this basis. Unfortunately, the optimum angle was not included in this study. Similarly, the normalisation of isokinetically determined strength deficits in 17 of 18 athletes with recurrent HMI was associated with a zero recurrence rate in the subsequent 12 months.<sup>124</sup> These findings indicate that isokinetically determined imbalance criteria can prospectively identify players at higher risk of subsequent hamstring injury and that the normalisation of such criteria, irrespective of the form of exercise undertaken to achieve this, can significantly reduce hamstring injury rates.

Isokinetic testing was conducted after the completion of six strengthening sessions, 22 days post the latter injury and 8 and 16 days prior to RTT and RTP, respectively. While eccentric testing and mixed speed and contraction H/Q ratios have been reported to be more sensitive in detecting imbalances,<sup>31</sup> there is a low risk of discomfort<sup>31</sup> and injury.<sup>125</sup> In our setting, this risk was not justifiable. Concentric peak flexion torque was 10% greater in the injured leg though average eccentric peak torque reduction in athletes with a similar history of HMI has been shown to be more than double the concentric reduction.<sup>124</sup>

Optimum angles were almost symmetrical and preferable to those reported in uninjured subjects,<sup>117</sup> immediately after high-dose eccentric exercises<sup>36</sup> and after a preseason programme in uninjured footballers.<sup>112</sup> They were comparable to a similarly recurrently injured AFL player following an extensive eccentric-based rehabilitation programme.<sup>113</sup> However, the optimum angle has only been studied prospectively once thus far and there was no difference between the injured and uninjured groups of sprinters.<sup>126</sup>

Concentric H/Q ratios would indicate that the player remains predisposed to injury according to the thresholds reported in some studies,<sup>100 126 127</sup> but not others.<sup>31</sup> Based on the parameters that were measured and Crosier's criteria defining preseason muscle imbalance, the player would not be classed as imbalanced though he would have failed to meet the more strict normalisation criteria and was not subjected to eccentric testing.<sup>31 124</sup>

Following the isokinetic test, the player completed a further six strengthening sessions, two high-speed running sessions and six team training sessions prior to RTP. While isokinetic testing was not repeated immediately prior to RTP, it is reasonable to expect that his isokinetic profile would have continued to improve as a result of this training. Continued optimisation of such factors remains a focus of the player's management indefinitely beyond his RTP.

Recent 'incontrovertible'<sup>49</sup> evidence demonstrated 'spectacularly good'<sup>49</sup> results in reducing both injury and recurrence rates in footballers with an eccentric Nordic hamstring exercise programme. New injuries and recurrences were reduced by 60% and 85%, respectively. The number needed to treat to prevent one injury (new or recurrent) was only 13 and to prevent one recurrence was only 3. No injuries were sustained during the exercise and there was no increase in the injury rate during the intervention period. The lack of significant decrease in the injury rate during the intervention period indicates that a critical volume of exercise needs to be reached before its effects are realised. However, once this volume is reached the effects were highly substantial. The authors suggest that the shift in optimum length, previously shown to be achieved by eccentric exercise and this particular exercise,<sup>36</sup> may be the mechanism by which such favourable effects were achieved.

The Nordic hamstring exercise also has its criticisms including being bilateral and thus potentially promoting existing asymmetries and that it is a single joint exercise, whereas biceps femoris which is the most commonly injured hamstring muscle<sup>65</sup> is biarticular.<sup>128</sup> It is also typically performed at slow velocity<sup>4 36 109 115</sup> and at relatively short muscle lengths until subjects have improved sufficiently to be able to lower themselves to the ground. However, it has been shown to significantly and immediately shift optimum length<sup>36 112 113 117</sup> and when performed in sufficient volume also dramatically reduce injury rates.<sup>109</sup> Unfortunately, the scheduling within a 6-week English Premier League preseason renders the application of this volume<sup>109</sup> of exercise very difficult to implement.

The need for eccentric training to be the foundation of muscle injury rehabilitation has already been outlined. However, it is important to note that in the elite sports setting, both in terms of striving to prevent HMI en masse, and within the context of injury rehabilitation, administering sufficient load to the hamstrings is a major challenge. In the context of an HMI rehabilitation which commonly average 3–4 weeks<sup>8</sup> the scheduling of optimal exercises and prescription of optimal dose are paramount. While most evidence for changing muscle properties revolves around the Nordic hamstring exercise, its limitations as outlined above demand that other exercises be prescribed for



the player with acute unilateral injury. The programme should be progressed not just in terms of resistance and volume but also in velocity, muscle length at contraction and multiple joint motion. A range of such exercises have been outlined in previous studies<sup>112 113 128</sup> and include manual eccentrics in various positions, forward deceleration steps, box drops landing in squat or lunge, eccentric forward pulls, eccentric single and stiff leg dead lifts. Other exercises with similar goals include slide-board leg curls, hamstring catapults, sprinter eccentric leg curls and loaded hip bridges.

Pain and acute injury healing may contraindicate resistance exercise for the first 3–5 days and the player should also return to training and playing not in a fatigued state thus requiring recovery time. This can leave time for as few as 5–7 intensive strengthening sessions if conducted every other day should the player RTP on 3 weeks.

This player completed 11 strengthening sessions prior to the latter injury. Following this episode, he completed 12 sessions prior to RTP. While a similar number of sessions, the mechanism of injury and clinical presentation of this episode were less severe, enabling a more rapid progression to more functional, multijoint, higher speed and greater length at contraction exercises, such as the hip dominant drop lunges and knee dominant sprinter eccentric leg curls in single leg standing.

The player consistently produced greater force on the injured leg with isometric testing measured by a dynamometer in supine at 90° of hip and knee flexion<sup>129</sup> and in prone at 15° knee flexion during the latter stages of the latter rehabilitation.<sup>15 71</sup> Askling's ballistic SLR test<sup>130</sup> was also devoid of pain and insecurity.

Several imaging studies<sup>44 65 131 132</sup> have demonstrated pathological signs and biceps femoris atrophy and increased strain in a significant proportion of subjects up to 2 years beyond RTP. Given that recurrence risk remains elevated for up to a year and that the effects of eccentric exercise have also been shown to be temporary,<sup>36 114</sup> it is imperative that the player continues his customised, varied eccentric programme indefinitely.

### Overload running programme

Peak hamstring force has been shown to significantly increase with increasing running speed from 80% to 100% effort<sup>118</sup> and so running at high speed is an essential and the most functional component of late stage rehabilitation. By contrast, peak hamstring stretch does not change significantly with increases in speed from 80% to 100%<sup>123</sup> so a player should only increase speed above this level once full ROM has been restored. The player will only overcome their anxieties and fear of reinjury having successfully completed a sufficient volume of this unique task which is an inherent demand of most sports. AFL players demonstrated relatively poor performance in their first match on RTP<sup>133</sup> and it is reasonable to postulate this is associated with a lack of confidence with sprinting especially given the relationship between sprint distance and repetitions in successful football matches.<sup>134</sup> Sprinters have reported taking a median of 16, and up to 50 weeks, to feel that they have returned to

preinjury levels of performance.<sup>44</sup> While in-house data trends and research<sup>135</sup> suggests that there is some risk in players completing high volumes of high-speed running, the risk in not performing a sufficient volume of such training contributing to reinjury upon returning to play may be even higher. Thus following the latter injury an overload approach was applied to the running component of the rehabilitation programme for three reasons:

1. High-speed running provides functional eccentric loading.<sup>19 51</sup>
2. Expose the player and his hamstrings to substantially more running load than is required during a typical week then taper just prior to RTT. This was administered to achieve physiological and psychological benefits while recognising that the match situation and its associated sympathetic responses and injury risk being 15 times greater than training<sup>11</sup> cannot be readily simulated.
3. The player's physical condition required improvement after repeated disruptions to training in recent months. The player's HR and HRV scores had been disproportionately high relative to his training load. Extra conditioning had been prescribed during this period however the player was still required to play matches and therefore the volume of conditioning had to be adjusted. A period of overload training provided an ideal opportunity to address this.

The results of this programme can be seen in table 4. The high-speed running volume was 49.8% higher in the overload rehabilitation programme than the previous rehabilitation programmes despite a moderate 16.8% increase in training time between the protocols.

The player was also not selected to play by the management when he was first declared available and so may have benefited from an extra week of team training prior to RTP.

### Injection therapies

Actovegin and Traumeel injections for treating muscle injuries are routine practice in German sports medicine. Actovegin is reported<sup>136</sup> to promote acceleration of muscle fibre synthesis in damaged muscle and de-toning of the hypertonic muscle bundle. Traumeel S, a homeopathic formulation, is alleged<sup>137</sup> to suppress the release of inflammatory mediators and stimulate the release of anti-inflammatory cytokines. There have been no controlled trials<sup>138</sup> into either substance for the treatment of HMI. Reduced HMI time to RTP was reportedly associated with Actovegin injections in professional footballers<sup>139</sup> though methodological flaws compromise the interpretation of outcomes of this pilot study.

However, there is not likely to be any harm in administering either substance.<sup>140</sup> While striving for the most comprehensive intervention and rehabilitation programme possible, the player consulted an acclaimed sports medicine physician and underwent a series of such injections. At the very least this had the psychological effect of ensuring the player felt he was provided with all interventions for which expert opinion suggests any benefit.

**Table 4** Total training loads of the player's final 'overload' hamstring rehabilitation protocol compared with the previous 'standard' protocol

|          | Sessions | Duration (min) | Dist (m) | Average distance per minute | High-speed distance (m) | Average high speed distance per minute | High-speed entries | Average HR (bpm) | Training load (RPE×min) |
|----------|----------|----------------|----------|-----------------------------|-------------------------|--|--------------------|------------------|-------------------------|
| Standard | 22       | 1130           | 83541    | 95.7                        | 8950                    | 8.94                                   | 996                | 136              | 5905                    |
| Overload | 29       | 1320           | 106225   | 107.7                       | 13409                   | 14.5                                   | 1388               | 141              | 7245                    |

## Stretching/yoga/relaxation

While evidence regarding hamstring flexibility as a risk factor for HMI remains ambiguous,<sup>3 14 23 25 32 126 127 141–143</sup> higher stretching frequency during rehabilitation was associated with earlier restoration of AKE ROM and reduced time to RTP.<sup>144</sup> Soft tissue healing theory<sup>145</sup> also advocates stretching within the treatment regime to maximise scar extensibility.

Maximum hamstring muscle lengths are reached during terminal swing phase of high-speed running with increasing speed beyond 80% only affecting the moment and speed at which it occurs.<sup>123 146</sup> Given that the moment of maximum length coincides with the highest risk phase of the gait cycle<sup>118–120 122</sup> and that prior HMI increases mechanical strain at the proximal biceps MTJ even at relatively low eccentric loads,<sup>132</sup> it is essential that optimal tissue extensibility is restored.

Reduced flexibility into hip extension has also been implicated as a risk factor for HMI.<sup>14</sup> Given that the activation level of iliopsoas in the stance leg greatly increases the stretch of the hamstrings of the swing leg<sup>118</sup> and that it was during this moment in the running stride that our player complained of his 'lack of freedom' of his injured hamstring, several manual techniques were employed to optimise hip extension ROM on his contralateral leg. However, ROM on modified Thomas Test<sup>147</sup> was not significantly limited or asymmetrical at any stage during his various rehabilitations. Currently, we continue to stretch the player's hamstrings regularly, including from Thomas test position with the contralateral hip concurrently stretched into hip extension. However, we note that static hamstring stretching with the ankle held in plantar grade has been shown not to achieve a change in SLR ROM or neurodynamics.<sup>48 96</sup>

Dru Yoga is shown to be effective in the treatment and management of low back pain and stress.<sup>148 149</sup> Whether the relaxation or stretching is contributing the most benefit remains unknown.

## CONCLUSION

We have presented a seven part intervention strategy for the management of recurrent HMI in one player. Whether any one of these interventions was the key factor in the success of this rehabilitation is impossible to determine. There are varying levels of evidence for every individual component of this treatment regimen. This gap between the evidence base and the reality of clinical practice and its variable outcomes intensifies the pressure on clinicians working in professional sport and invites the temptation of speculative interventions. The clinician is obliged to deliver interventions based on the evidence that is available in its varying levels and forms. This is true for the management of many injuries encountered in sports medicine and medicine generally. Our profession must acknowledge this inadequacy and pursue the evidence essential to overcome it.

### What are the new findings?

- ▶ A new rehabilitation protocol is proposed for the management of recurrent hamstring injuries.

### How might it impact on clinical practice in the near future?

- ▶ This paper will help clinicians in determining the rehabilitation protocol for a recurrent hamstring injury.

**Contributors** PB coordinated the treatment programme and with AN was the main author of the paper. CM and DB were involved in the management of the patient and contributed to appropriate sections of the paper. AD was the radiologist involved in the management of the patient and provided the images.

**Competing interests** None.

**Provenance and peer review** Not commissioned; externally peer reviewed.

**Open Access** This is an Open Access article distributed in accordance with the Creative Commons Attribution Non Commercial (CC BY-NC 3.0) license, which permits others to distribute, remix, adapt, build upon this work non-commercially, and license their derivative works on different terms, provided the original work is properly cited and the use is non-commercial. See: <http://creativecommons.org/licenses/by-nc/3.0/>

## REFERENCES

- Alonso JM, Tscholl PM, Engebretsen L, *et al.* Occurrence of injuries and illnesses during the 2009 IAAF World Athletics Championships. *Br J Sports Med* 2010;44:1100–5.
- Orchard JW, James T, Portus MR. Injuries to elite male cricketers in Australia over a 10-year period. *J Sci Med Sport* 2006;9:459–67.
- Arnason A, Sigurdsson SB, Gudmundsson A, *et al.* Risk factors for injuries in football. *Am J Sports Med* 2004;32(1 Suppl):S5–16S.
- Brooks JH, Fuller CW, Kemp SP, *et al.* Incidence, risk, and prevention of hamstring muscle injuries in professional rugby union. *Am J Sports Med* 2006;34:1297–306.
- Ekstrand J, Hagglund M, Walden M. Injury incidence and injury patterns in professional football: the UEFA injury study. *Br J Sports Med* 2011;45:553–8.
- Elliott MC, Zarins B, Powell JW, *et al.* Hamstring muscle strains in professional football players: a 10-year review. *Am J Sports Med* 2011;39:843–50.
- Gabbett TJ. The development and application of an injury prediction model for noncontact, soft-tissue injuries in elite collision sport athletes. *J Strength Cond Res* 2010;24:2593–603.
- Orchard J, Seward H, Orchard J. AFL injury report season. 2011; [afl.com.au](http://afl.com.au) 2012.
- Hagglund M, Walden M, Ekstrand J. Previous injury as a risk factor for injury in elite football: a prospective study over two consecutive seasons. *Br J Sports Med* 2006;40:767–72.
- Malliaropoulos N, Isinkaye T, Tsisas K, *et al.* Reinjury after acute posterior thigh muscle injuries in elite track and field athletes. *Am J Sports Med* 2011;39:304–10.
- Petersen J, Thorborg K, Nielsen MB, *et al.* Acute hamstring injuries in Danish elite football: a 12-month prospective registration study among 374 players. *Scand J Med Sci Sports* 2010;20:588–92.
- Woods C, Hawkins RD, Maltby S, *et al.* The Football Association Medical Research Programme: an audit of injuries in professional football—analysis of hamstring injuries. *Br J Sports Med* 2004;38:36–41.
- Orchard J, Seward H. Epidemiology of injuries in the Australian Football League, seasons 1997–2000. *Br J Sports Med* 2002;36:39–44.
- Gabbe BJ, Bennell KL, Finch CF, *et al.* Predictors of hamstring injury at the elite level of Australian football. *Scand J Med Sci Sports* 2006;16:7–13.
- Warren P, Gabbe BJ, Schneider-Kolsky M, *et al.* Clinical predictors of time to return to competition and of recurrence following hamstring strain in elite Australian footballers. *Br J Sports Med* 2010;44:415–19.
- Hamilton B. Hamstring muscle strain injuries: what can we learn from history? *Br J Sports Med* 2012;46:900–3.
- Ekstrand J, Hagglund M, Walden M. Epidemiology of muscle injuries in professional football (soccer). *Am J Sports Med* 2011;39:1226–32.
- Mendiguchia J, Alentorn-Geli E, Brughelli M. Hamstring strain injuries: are we heading in the right direction? *Br J Sports Med* 2012;46:81–5.
- Heiderscheit BC, Sherry MA, Silder A, *et al.* Hamstring strain injuries: recommendations for diagnosis, rehabilitation, and injury prevention. *J Orthop Sports Phys Ther* 2010;40:67–81.
- Askling CM, Malliaropoulos N, Karlsson J. High-speed running type or stretching-type of hamstring injuries makes a difference to treatment and prognosis. *Br J Sports Med* 2012;46:86–7.
- Askling C. Types of hamstring injuries in sports. *Br J Sports Med* 2011;45:e2 doi:10.1136/bjsem.2010.081570.15
- de Visser H, Reijman M, Heijboer M, *et al.* Risk factors of recurrent hamstring injuries: a systematic review. *Br J Sports Med* 2012;46:124–30.
- Engebretsen AH, Myklebust G, Holme I, *et al.* Intrinsic risk factors for hamstring injuries among male soccer players: a prospective cohort study. *Am J Sports Med* 2010;38:1147–53.
- Gabbe BJ, Bennell KL, Finch CF. Why are older Australian football players at greater risk of hamstring injury? *J Sci Med Sport* 2006;9:327–33.
- Gabbe BJ, Finch CF, Bennell KL, *et al.* Risk factors for hamstring injuries in community level Australian football. *Br J Sports Med* 2005;39:106–10.
- Orchard JW. Intrinsic and extrinsic risk factors for muscle strains in Australian football. *Am J Sports Med* 2001;29:300–3.

- 27 Verrall GM, Slavotinek JP, Barnes PG, *et al.* Clinical risk factors for hamstring muscle strain injury: a prospective study with correlation of injury by magnetic resonance imaging. *Br J Sports Med* 2001;35:435–9; discussion 40.
- 28 Prior M, Guerin M, Grimmer K. An evidence-based approach to hamstring strain injury: a systematic review of the literature. *Sports Health* 2009;1:154–64.
- 29 Koulouris G, Connell DA, Brukner P, *et al.* Magnetic resonance imaging parameters for assessing risk of recurrent hamstring injuries in elite athletes. *Am J Sports Med* 2007;35:1500–6.
- 30 Greig M, Siegler JC. Soccer-specific fatigue and eccentric hamstrings muscle strength. *J Athl Train* 2009;44:180–4.
- 31 Croisier JL, Ganteaume S, Binet J, *et al.* Strength imbalances and prevention of hamstring injury in professional soccer players: a prospective study. *Am J Sports Med* 2008;36:1469–75.
- 32 Bennell K, Wajswelner H, Lew P, *et al.* Isokinetic strength testing does not predict hamstring injury in Australian rules footballers. *Br J Sports Med* 1998;32:309–14.
- 33 Croisier JL. Factors associated with recurrent hamstring injuries. *Sports Med* 2004;34:681–95.
- 34 Verrall GM, Slavotinek JP, Barnes PG, *et al.* Assessment of physical examination and magnetic resonance imaging findings of hamstring injury as predictors for recurrent injury. *J Orthop Sports Phys Ther* 2006;36:215–24.
- 35 Gibbs NJ, Cross TM, Cameron M, *et al.* The accuracy of MRI in predicting recovery and recurrence of acute grade one hamstring muscle strains within the same season in Australian Rules football players. *J Sci Med Sport* 2004;7:248–58.
- 36 Brockett CL, Morgan DL, Proske U. Human hamstring muscles adapt to eccentric exercise by changing optimum length. *Med Sci Sports Exerc* 2001;33:783–90.
- 37 Drouin JM, Valovich-McLeod TC, Shultz SJ, *et al.* Reliability and validity of the biodex system 3 pro isokinetic dynamometer velocity, torque and position measurements. *Eur J Appl Physiol* 2004;91:22–9.
- 38 Impellizzeri FM, Bizzini M, Rampinini E, *et al.* Reliability of isokinetic strength imbalance ratios measured using the Cybex NORM dynamometer. *Clin Physiol Funct Imaging* 2008;28:113–19.
- 39 Mason DL, Dickens V, Vail A. Rehabilitation for hamstring injuries. *Cochrane Database Syst Rev* 2007;(1):CD004575.
- 40 Reurink G, Goudswaard GJ, Tol JL, *et al.* Therapeutic interventions for acute hamstring injuries: a systematic review. *Br J Sports Med* 2012;46:103–9.
- 41 Sackett DL, Rosenberg WMC, Gray Muir JA, *et al.* Evidence based medicine: what it is and what it isn't. *BMJ* 1996;312:71–2.
- 42 Brukner P, Khan K. *Brukner and Khan's clinical sports medicine*. 4th edn. Sydney: McGraw Hill, 2012.
- 43 Peetrons P. Ultrasound of muscles. *Eur Radiol* 2002;12:35–43.
- 44 Asklung CM, Tengvar M, Saartok T, *et al.* Acute first-time hamstring strains during high-speed running: a longitudinal study including clinical and magnetic resonance imaging findings. *Am J Sports Med* 2007;35:197–206.
- 45 Bennell KL, Talbot RC, Wajswelner H, *et al.* Intra-rater and inter-rater reliability of a weight-bearing lunge measure of ankle dorsiflexion. *Aust J Physiother* 1998;44:175–80.
- 46 Dennis RJ, Finch CF, Elliott BC, *et al.* The reliability of musculoskeletal screening tests used in cricket. *Phys Ther Sport* 2008;9:25–33.
- 47 Peltier LF. Trendelenburg's test: 1895. *Clin Orthop Rel Res* 1998;355:3–7.
- 48 Méndez-Sánchez R, Albuquerque-Sendín F, Fernández-de-las-Peñas C, *et al.* Immediate effects of adding a sciatic nerve slider technique on lumbar and lower quadrant mobility in soccer players: a pilot study. *J Altern Complement Med* 2010;16:669–75.
- 49 Thorborg K. Why hamstring eccentrics are hamstring essentials. *Br J Sports Med* 2012;46:463–5.
- 50 Asklung C, Karlsson J, Thorstenson A. Hamstring injury occurrence in elite soccer players after preseason strength training with eccentric overload. *Scand J Med Sci Sports* 2003;13:244–50.
- 51 Opar DA, Williams MD, Shield AJ. Hamstring strain injuries: factors that lead to injury and re-injury. *Sports Med* 2012;42:209–26.
- 52 Berthoin S, Mantéca F, Gerbeaux M, *et al.* Effect of a 12-week training programme on Maximal Aerobic Speed (MAS) and running time to exhaustion at 100% of MAS for students aged 14–17 years. *J Sports Med Phys Fitness* 1995;35:251–6.
- 53 Coutts AJ, Duffield R. Validity and reliability of GPS devices for measuring movement demands of team sports. *J Sci Med Sport* 2010;13:133–5.
- 54 Delahunt E, McEntee BL, Kennelly C, *et al.* Intrarater reliability of the adductor squeeze test in gaelic games athletes. *J Athl Train* 2011;46:241–5.
- 55 Thorborg K, Serner A, Petersen J, *et al.* Hip adduction and abduction strength profiles in elite soccer players: implications for clinical evaluation of hip adductor muscle recovery after injury. *Am J Sports Med* 2010;39:121–6.
- 56 Fousekis K, Tsepis E, Poulmedis P, *et al.* Intrinsic risk factors of non-contact quadriceps and hamstring strains in soccer: a prospective study of 100 professional players. *Br J Sports Med* 2011;45:709–14.
- 57 Cummings G, Scholz JP, Barnes K. The effect of imposed leg length difference on pelvic bone symmetry. *Spine* 1993;18:368–73.
- 58 Arab AM, Ghamkhar L, Emami M, *et al.* Altered muscular activation during prone hip extension in women with and without low back pain. *Chiropr Man Therap* 2011;19:18.
- 59 Sugiura Y, Saito T, Sakuraba K, *et al.* Strength deficits identified with concentric action of the hip extensors and eccentric action of the hamstrings predispose to hamstring injury in elite sprinters. *J Orthop Sports Phys Ther* 2008;38:457–64.
- 60 Mens JM, Vleeming A, Snijders CJ, *et al.* The active straight leg raising test and mobility of the pelvic joints. *Eur Spine J* 1999;8:468–73.
- 61 Hungerford BA, Gilleard W, Moran M, *et al.* Evaluation of the ability of physical therapists to palpate intrapelvic motion with the Stork test on the support side. *Phys Ther* 2007;87:879–87.
- 62 Hungerford B, Gilleard W, Lee D. Altered patterns of pelvic bone motion determined in subjects with posterior pelvic pain using skin markers. *Clin Biomech (Bristol, Avon)* 2004;19:456–64.
- 63 Jamaluddin S, Sulaiman AR, Imran MK, *et al.* Reliability and accuracy of the tape measurement method with a nearest reading of 5 mm in the assessment of leg length discrepancy. *Singapore Med J* 2011;52:681–4.
- 64 Sabharwal S, Zhao C, McKeon J, *et al.* Reliability analysis for radiographic measurement of limb length discrepancy: full-length standing anteroposterior radiograph versus scanogram. *J Pediatr Orthop* 2007;27:46–50.
- 65 Connell DA, Schneider-Kolsky ME, Hoving JL, *et al.* Longitudinal study comparing sonographic and MRI assessments of acute and healing hamstring injuries. *AJR Am J Roentgenol* 2004;183:975–84.
- 66 van Wingerden JP, Vleeming A, Snijders CJ, *et al.* A functional-anatomical approach to the spine-pelvis mechanism: interaction between the biceps femoris muscle and the sacrotuberous ligament. *Eur Spine J* 1993;2:140–4.
- 67 Vleeming A, Pool-Goudswaard AL, Hammudoghlu D, *et al.* The function of the long dorsal sacroiliac ligament: its implication for understanding low back pain. *Spine* 1996;21:556–62.
- 68 Vleeming A, Stoockart R, Snijders CJ. The sacrotuberous ligament: a conceptual approach to its dynamic role in stabilizing the sacroiliac joint. *Clin Biomech* 1989;4:201–3.
- 69 van Wingerden JP, Vleeming A, Buyruk HM, *et al.* Stabilization of the sacroiliac joint in vivo: verification of muscular contribution to force closure of the pelvis. *Eur Spine J* 2004;13:199–205.
- 70 Herzog W, Conway PJ. Gait analysis of sacroiliac joint patients. *J Manipulative Physiol Ther* 1994;17:124–7.
- 71 Mendiguchia J, Brughelli M. A return-to-sport algorithm for acute hamstring injuries. *Phys Ther Sport* 2011;12:2–14.
- 72 Hungerford B, Gilleard W, Hodges P. Evidence of altered lumbopelvic muscle recruitment in the presence of sacroiliac joint pain. *Spine* 2003;28:1593–600.
- 73 Sole G, Milosavljevic S, Nicholson H, *et al.* Altered muscle activation following hamstring injuries. *Br J Sports Med* 2012;46:118–23.
- 74 Nourbakhsh MR, Arab AM. Relationship between mechanical factors and incidence of low back pain. *J Orthop Sports Phys Ther* 2002;32:447–60.
- 75 Nourbakhsh MR, Arab AM, Salavati M. The relationship between pelvic cross syndrome and chronic low back pain. *J Back Musculoskelet Rehabil* 2006;19:119–28.
- 76 Toppenberg R, Bullock M. Normal lumbo-pelvic muscle lengths and their interrelationships in adolescent females. *Aust J Physiother* 1990;36:105–9.
- 77 Gajdosik RL, Hatcher CK, Whitsell S. Influence of short hamstring muscles on the pelvis and lumbar spine in standing and during toe-touch test. *Clin Biomech* 1992;7:38–42.
- 78 Hennessey L, Watson AW. Flexibility and posture assessment in relation to hamstring injury. *Br J Sports Med* 1993;27:243–6.
- 79 Wallden M, Walters N. Does lumbo-pelvic dysfunction predispose to hamstring strain in professional soccer players? *J Bodywork Mov Ther* 2005;9:99–108.
- 80 Cibulka MT, Rose SJ, Delitto A, *et al.* Hamstring muscle strain treated by mobilizing the sacroiliac joint. *Phys Ther* 1986;66:1220–3.
- 81 Hoskins WT, Pollard HP. Successful management of hamstring injuries in Australian rules footballers: two case reports. *Chiropr Osteopat* 2005;13:4.
- 82 Laslett M, Aprill CN, McDonald B, *et al.* Diagnosis of sacroiliac joint pain: validity of individual provocation tests and composites of tests. *Man Ther* 2005;10:207–18.
- 83 Cibulka MT, Sinacore DR, Cromer GS, *et al.* Unilateral hip rotation range of motion asymmetry in patients with sacroiliac joint regional pain. *Spine* 1998;23:1009–15.
- 84 Arumugam A, Milosavljevic S, Woodley S, *et al.* Effects of external pelvic compression on form closure, force closure, and neuromotor control of the lumbopelvic spine—a systematic review. *Man Ther* 2012;17:275–84.
- 85 McHugh MP, Johnson CD, Morrison RH. The role of neural tension in hamstring flexibility. *Scand J Med Sci Sports* 2012;22:164–9.
- 86 Maitland G. The slump test: examination and treatment. *Aust J Physiother* 1985;31:215–19.
- 87 Turl SE, George KP. Adverse neural tension: a factor in repetitive hamstring strain? *J Orthop Sports Phys Ther* 1998;27:16–21.
- 88 Shacklock M. Improving application of neurodynamic (neural tension) testing and treatments: a message to researchers and clinicians. *Man Ther* 2005;10:175–9.
- 89 Kornberg C, Lew P. The effect of stretching neural structures on grade one hamstring injuries. *J Orthop Sports Phys Ther* 1989;10:481–7.
- 90 Koulouris G, Connell D. Hamstring muscle complex: an imaging review. *Radiographics* 2005;25:571–86.

- 91 Schneider-Kolsky ME, Hoving JL, Warren P, *et al.* A comparison between clinical assessment and magnetic resonance imaging of acute hamstring injuries. *Am J Sports Med* 2006;34:1008–15.
- 92 Slavotinek JP, Verrall GM, Fon GT. Hamstring injury in athletes: using MR imaging measurements to compare extent of muscle injury with amount of time lost from competition. *AJR Am J Roentgenol* 2002;179:1621–8.
- 93 Orchard JW, Farhart P, Leopold C. Lumbar spine region pathology and hamstring and calf injuries in athletes: is there a connection? *Br J Sports Med* 2004;38:502–4; discussion 02–4.
- 94 Orchard J, Seward H. AFL injury report 2002. *Sport Health* 2003;21:18–23.
- 95 Krych AJ, Richman D, Drakos M, *et al.* Epidural steroid injection for lumbar disc herniation in NFL athletes. *Med Sci Sports Exerc* 2012;44:193–8.
- 96 Slezacek AM, Georgilopoulos P, Bullock-Saxton JE, *et al.* The immediate effect of unilateral lumbar Z-joint mobilisation on posterior chain neurodynamics: a randomised controlled study. *Man Ther* 2011;16:609–13.
- 97 Boyd BS, Wanek L, Gray AT, *et al.* Mechanosensitivity of the lower extremity nervous system during straight-leg raise neurodynamic testing in healthy individuals. *J Orthop Sports Phys Ther* 2009;39:780–90.
- 98 Perry J, Green A. An investigation into the effects of a unilaterally applied lumbar mobilisation technique on peripheral sympathetic nervous system activity in the lower limbs. *Man Ther* 2008;13:492–9.
- 99 Sherry MA, Best TM. A comparison of 2 rehabilitation programs in the treatment of acute hamstring strains. *J Orthop Sports Phys Ther* 2004;34:116–25.
- 100 Cameron M, Adams R, Maher C. Motor control and strength as predictors of hamstring injury in elite players of Australian football. *Phys Ther Sport* 2003;4:159–66.
- 101 Cameron ML, Adams RD, Maher CG, *et al.* Effect of the HamSprint Drills training programme on lower limb neuromuscular control in Australian football players. *J Sci Med Sport* 2009;12:24–30.
- 102 Kuszewski M, Gnat R, Saulicz E. Stability training of the lumbo-pelvo-hip complex influence stiffness of the hamstrings: a preliminary study. *Scand J Med Sci Sports* 2009;19:260–6.
- 103 Kraemer R, Knobloch K. A soccer-specific balance training program for hamstring muscle and patellar and achilles tendon injuries: an intervention study in premier league female soccer. *Am J Sports Med* 2009;37:1384–93.
- 104 Kankaanpää M, Taimela S, Airaksinen O, *et al.* The efficacy of active rehabilitation in chronic low back pain. Effect on pain intensity, self-experienced disability, and lumbar fatigability. *Spine* 1999;24:1034–42.
- 105 Taimela S, Negri S, Paroli C. Functional rehabilitation of low back disorders. *Eura Medicophys* 2004;40:29–36.
- 106 Goldman EF, Jones DE. Interventions for preventing hamstring injuries. *Cochrane Database Syst Rev* 2010;(1):CD006782.
- 107 Arnason A, Andersen TE, Holme I, *et al.* Prevention of hamstring strains in elite soccer: an intervention study. *Scand J Med Sci Sports* 2008;18:40–8.
- 108 Engebretsen AH, Myklebust G, Holme I, *et al.* Prevention of injuries among male soccer players: a prospective, randomized intervention study targeting players with previous injuries or reduced function. *Am J Sports Med* 2008;36:1052–60.
- 109 Petersen J, Thorborg K, Nielsen MB, *et al.* Preventive effect of eccentric training on acute hamstring injuries in men's soccer: a cluster-randomized controlled trial. *Am J Sports Med* 2011;39:2296–303.
- 110 Mjøltnes R, Arnason A, Østhaugen T, *et al.* A 10-week randomized trial comparing eccentric vs. concentric hamstring strength training in well-trained soccer players. *Scand J Med Sci Sports* 2004;14:311–17.
- 111 Gabbe BJ, Branson R, Bennell KL. A pilot randomised controlled trial of eccentric exercise to prevent hamstring injuries in community-level Australian Football. *J Sci Med Sport* 2006;9:103–9.
- 112 Brughelli M, Cronin J, Mendiguchia J, *et al.* Contralateral leg deficits in kinetic and kinematic variables during running in Australian rules football players with previous hamstring injuries. *J Strength Cond Res* 2010;24:2539–44.
- 113 Brughelli M, Nosaka K, Cronin J. Application of eccentric exercise on an Australian Rules football player with recurrent hamstring injuries. *Phys Ther Sport* 2009;10:75–80.
- 114 Kilgallon M, Donnelly AE, Shafat A. Progressive resistance training temporarily alters hamstring torque-angle relationship. *Scand J Med Sci Sports* 2007;17:18–24.
- 115 Clark RA, Bryant AL, Culgan J, *et al.* The effects of eccentric hamstring strength training on dynamic jumping performance and isokinetic strength parameters: a pilot study on the implications for the prevention of hamstring injuries. *Phys Ther Sport* 2005;6:67–73.
- 116 Sole G, Milosavljevic S, Nicholson HD, *et al.* Selective strength loss and decreased muscle activity in hamstring injury. *J Orthop Sports Phys Ther* 2011;41:354–63.
- 117 Brockett CL, Morgan DL, Proske U. Predicting hamstring strain injury in elite athletes. *Med Sci Sports Exerc* 2004;36:379–87.
- 118 Chumanov ES, Heiderscheidt BC, Thelen DG. The effect of speed and influence of individual muscles on hamstring mechanics during the swing phase of sprinting. *J Biomech* 2007;40:3555–62.
- 119 Chumanov ES, Heiderscheidt BC, Thelen DG. Hamstring musculotendon dynamics during stance and swing phases of high-speed running. *Med Sci Sports Exerc* 2011;43:525–32.
- 120 Chumanov ES, Schache AG, Heiderscheidt BC, *et al.* Hamstrings are most susceptible to injury during the late swing phase of sprinting. *Br J Sports Med* 2012;46:90.
- 121 Heiderscheidt BC, Hoerth DM, Chumanov ES, *et al.* Identifying the time of occurrence of a hamstring strain injury during treadmill running: a case study. *Clin Biomech (Bristol, Avon)* 2005;20:1072–8.
- 122 Schache AG, Kim HJ, Morgan DL, *et al.* Hamstring muscle forces prior to and immediately following an acute sprinting-related muscle strain injury. *Gait Posture* 2010;32:136–40.
- 123 Thelen DG, Chumanov ES, Hoerth DM, *et al.* Hamstring muscle kinematics during treadmill sprinting. *Med Sci Sports Exerc* 2005;37:108–14.
- 124 Croisier JL, Forthomme B, Namurois MH, *et al.* Hamstring muscle strain recurrence and strength performance disorders. *Am J Sports Med* 2002;30:199–203.
- 125 Orchard J, Steet E, Walker C, *et al.* Hamstring muscle strain injury caused by isokinetic testing. *Clin J Sport Med* 2001;11:274–6.
- 126 Yeung SS, Suen AM, Yeung EW. A prospective cohort study of hamstring injuries in competitive sprinters: preseason muscle imbalance as a possible risk factor. *Br J Sports Med* 2009;43:589–94.
- 127 Orchard J, Marsden J, Lord S, *et al.* Preseason hamstring muscle weakness associated with hamstring muscle injury in Australian footballers. *Am J Sports Med* 1997;25:81–5.
- 128 Brughelli M, Cronin J. Preventing hamstring injuries in sport. *NSCA Strength Condition J* 2008;30:55–64.
- 129 Schache AG, Crossley KM, Macindoe IG, *et al.* Can a clinical test of hamstring strength identify football players at risk of hamstring strain? *Knee Surg Sports Traumatol Arthrosc* 2011;19:38–41.
- 130 Askling CM, Nilsson J, Thorstensson A. A new hamstring test to complement the common clinical examination before return to sport after injury. *Knee Surg Sports Traumatol Arthrosc* 2010;18:1798–803.
- 131 Silder A, Heiderscheidt BC, Thelen DG, *et al.* MR observations of long-term musculotendon remodeling following a hamstring strain injury. *Skeletal Radiol* 2008;37:1101–9.
- 132 Silder A, Reeder SB, Thelen DG. The influence of prior hamstring injury on lengthening muscle tissue mechanics. *J Biomech* 2010;43:2254–60.
- 133 Verrall GM, Kalairajah Y, Slavotinek JP, *et al.* Assessment of player performance following return to sport after hamstring muscle strain injury. *J Sci Med Sport* 2006;9:87–90.
- 134 Faude O, Koch T, Meyer T. Straight sprinting is the most frequent action in goal situations in professional football. *J Sports Sci* 2012;30:625–31.
- 135 Gabbett TJ, Ullah S. Relationship between running loads and soft-tissue injury in elite team sport athletes. *Strength Cond Res* 2012;26:953–60.
- 136 Pfister A, Koller W. Treatment of fresh muscle injury. *Sportverletz Sportschaden* 1990;4:41–4.
- 137 Lussignoli S, Bertani S, Metelmann H, *et al.* Effect of Traumeel S, a homeopathic formulation, on blood induced inflammation in rats. *Complement Ther Med* 1999;7:225–30.
- 138 Orchard JW, Best TM, Mueller-Wohlfahrt HW, *et al.* The early management of muscle strains in the elite athlete: best practice in a world with a limited evidence basis. *Br J Sports Med* 2008;42:158–9.
- 139 Lee P, Rattenberry A, Connelly S, *et al.* Our experience on Actovegin, is it cutting edge? *Int J Sports Med* 2011;32:237–41.
- 140 Ziegler D, Moveșyan L, Mankovsky B, *et al.* Treatment of symptomatic polyneuropathy with Actovegin in type 2 diabetic patients. *Diabetes Care* 2009;32:1479–84.
- 141 Bradley PS, Portas MD. The relationship between preseason range of motion and muscle strain injury in elite soccer players. *J Strength Condition Res* 2007;21:1155–9.
- 142 Henderson G, Barnes CA, Portas MD. Factors associated with increased propensity for hamstring injury in English Premier League soccer players. *J Sci Med Sport* 2010;13:397–402.
- 143 Witvrouw E, Danneels L, Asselman P, *et al.* Muscle flexibility as a risk factor for developing muscle injuries in male professional soccer players. A prospective study. *Am J Sports Med* 2003;31:41–6.
- 144 Malliaropoulos N, Papalexandris S, Papalada A, *et al.* The role of stretching in rehabilitation of hamstring injuries: 80 athletes follow-up. *Med Sci Sports Exerc* 2004;36:756–9.
- 145 Järvinen TA, Järvinen TL, Kääriäinen M, *et al.* Muscle injuries: optimising recovery. *Best Pract Res Clin Rheumatol* 2007;21:317–31.
- 146 Yu B, Queen RM, Abbey AN, *et al.* Hamstring muscle kinematics and activation during overground sprinting. *J Biomech* 2008;41:3121–6.
- 147 Harvey D. Assessment of the flexibility of elite athletes using the modified Thomas test. *Br J Sports Med* 1998;32:68–70.
- 148 Hartfiel N, Havenhand J, Khalsa SB, *et al.* The effectiveness of yoga for the improvement of well-being and resilience to stress in the workplace. *Scand J Work Environ Health* 2011;37:70–6.
- 149 Tilbrook HE, Cox H, Hewitt CE, *et al.* Yoga for chronic low back pain: a randomized trial. *Ann Intern Med* 2011;155:569–78.



## Recurrent hamstring muscle injury: applying the limited evidence in the professional football setting with a seven-point programme

Peter Brukner, Andrew Nealon, Christopher Morgan, et al.

*Br J Sports Med* published online January 15, 2013

doi: 10.1136/bjsports-2012-091400

---

Updated information and services can be found at:  
<http://bjsm.bmj.com/content/early/2013/01/14/bjsports-2012-091400.full.html>

---

*These include:*

- |                               |   |
|-------------------------------|---|
| <b>References</b>             | This article cites 145 articles, 48 of which can be accessed free at:<br><a href="http://bjsm.bmj.com/content/early/2013/01/14/bjsports-2012-091400.full.html#ref-list-1">http://bjsm.bmj.com/content/early/2013/01/14/bjsports-2012-091400.full.html#ref-list-1</a>  |
| <b>Open Access</b>            | This is an open-access article distributed under the terms of the Creative Commons Attribution Non-commercial License, which permits use, distribution, and reproduction in any medium, provided the original work is properly cited, the use is non commercial and is otherwise in compliance with the license. See:<br><a href="http://creativecommons.org/licenses/by-nc/3.0/">http://creativecommons.org/licenses/by-nc/3.0/</a> and<br><a href="http://creativecommons.org/licenses/by-nc/3.0/legalcode">http://creativecommons.org/licenses/by-nc/3.0/legalcode</a> |
| <b>P&lt;P</b>                 | Published online January 15, 2013 in advance of the print journal.  |
| <b>Email alerting service</b> | Receive free email alerts when new articles cite this article. Sign up in the box at the top right corner of the online article.  |

---

Advance online articles have been peer reviewed, accepted for publication, edited and typeset, but have not yet appeared in the paper journal. Advance online articles are citable and establish publication priority; they are indexed by PubMed from initial publication. Citations to Advance online articles must include the digital object identifier (DOIs) and date of initial publication.

---

To request permissions go to:  
<http://group.bmj.com/group/rights-licensing/permissions>

To order reprints go to:  
<http://journals.bmj.com/cgi/reprintform>

To subscribe to BMJ go to:  
<http://group.bmj.com/subscribe/>

**Topic  
Collections**

Articles on similar topics can be found in the following collections

[Open access](#) (64 articles)

---

**Notes**

---

Advance online articles have been peer reviewed, accepted for publication, edited and typeset, but have not yet appeared in the paper journal. Advance online articles are citable and establish publication priority; they are indexed by PubMed from initial publication. Citations to Advance online articles must include the digital object identifier (DOIs) and date of initial publication.

---

To request permissions go to:

<http://group.bmj.com/group/rights-licensing/permissions>

To order reprints go to:

<http://journals.bmj.com/cgi/reprintform>

To subscribe to BMJ go to:

<http://group.bmj.com/subscribe/>